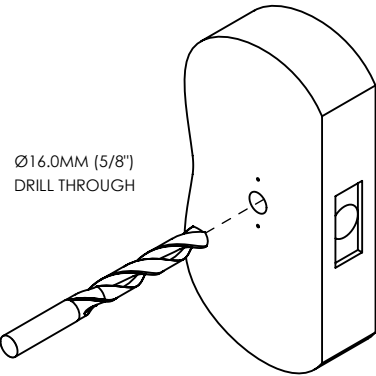


FLAT ROUND ROSE - PASSAGE PAIR - SPRUNG

FAILURE TO FOLLOW INSTRUCTIONS CAN RESULT
IN ROSE NOT FLUSH TO DOOR AND POOR RETURN OF LEVER



A



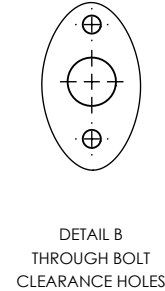
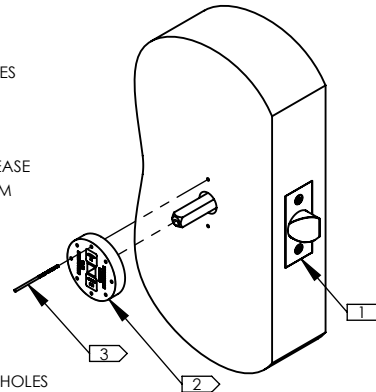
B

L/H LEVER

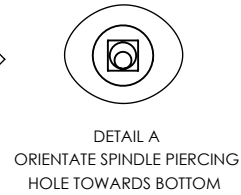
- 1 INSTALL LATCH INTO DOOR AND INSERT SPINDLE (SEE DETAIL A)
- 2 PLACE CENTERING TOOL OVER SPINDLE
- 3 DRILL 2X Ø2MM (1/16") PILOT HOLES THROUGH TO LATCH POCKET (SEE DETAIL B)
- 4 REMOVE CENTERING TOOL & INCREASE TOP & BOTTOM HOLES TO Ø6.0MM THROUGH DOOR (SEE DETAIL B)

*ENSURE CENTERING TOOL IS FLAT AGAINST DOOR WHEN DRILLING HOLES

*CENTERING TOOL FEATURES SECOND SET OF HOLES OFFSET, IF REQUIRED DURING INSTALLATION



DETAIL B
THROUGH BOLT
CLEARANCE HOLES

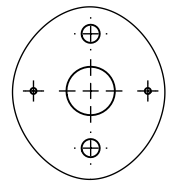
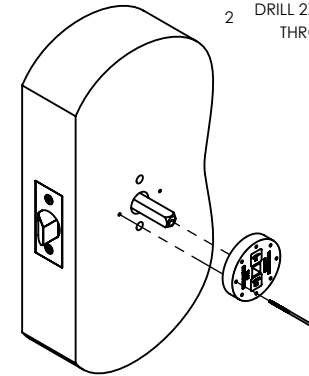


DETAIL A
ORIENTATE SPINDLE PIERCING
HOLE TOWARDS BOTTOM

C

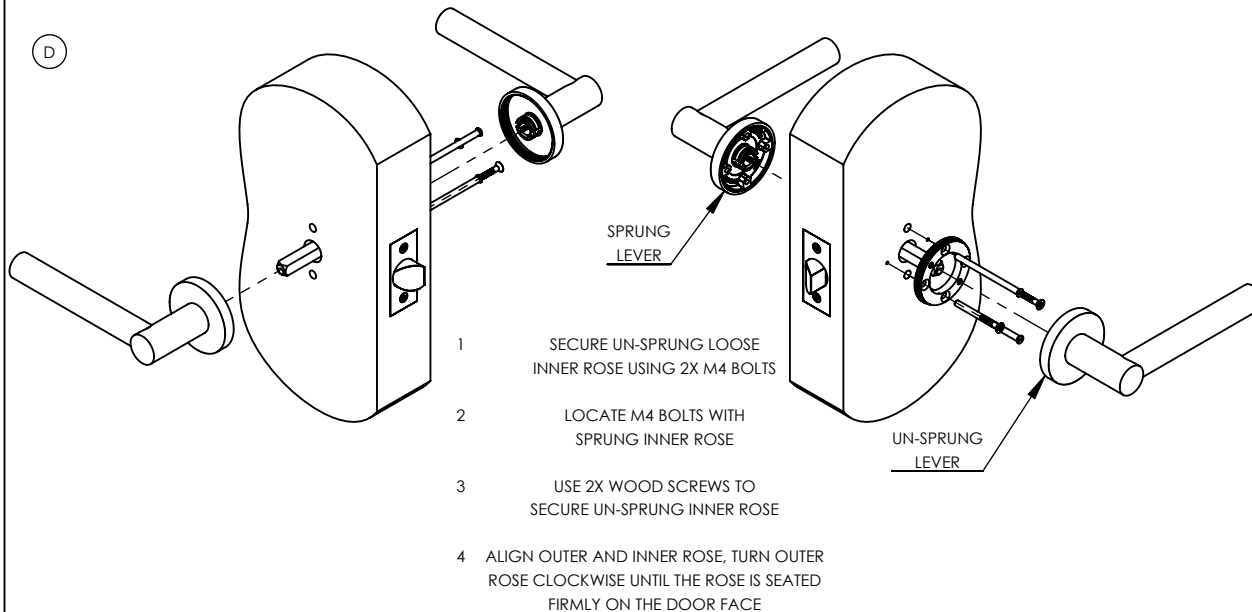
R/H LEVER

- 1 PLACE CENTERING TOOL OVER SPINDLE
- 2 DRILL 2X Ø2MM (1/16") PILOT HOLES THROUGH TO LATCH POCKET (SEE DETAIL C)



DETAIL C
WOOD SCREW
PILOT HOLES

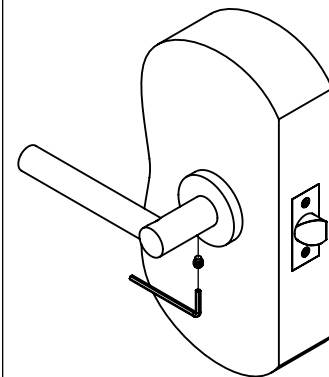
D



- 1 SECURE UN-SPRUNG LOOSE INNER ROSE USING 2X M4 BOLTS
- 2 LOCATE M4 BOLTS WITH SPRUNG INNER ROSE
- 3 USE 2X WOOD SCREWS TO SECURE UN-SPRUNG INNER ROSE
- 4 ALIGN OUTER AND INNER ROSE, TURN OUTER ROSE CLOCKWISE UNTIL THE ROSE IS SEATED FIRMLY ON THE DOOR FACE

*DO NOT FORCE INNER AND OUTER ROSE TOGETHER, THIS WILL DAMAGE THE INNER ROSE

E



TIGHTEN GRUB SCREW TO
SECURE LEVER TO SPINDLE
(BOTH SIDES)

FIXING KIT



THREADED INNER ROSE
(X1)



CENTERING TOOL
(X1)



FIXING SCREWS
(X2)



THROUGH BOLTS
(X2)



PIERCING SCREWS
(X2)



ALLEN KEY
(X1)



SPINDLE
(X1)

28/08/2025

TURNSTYLE DESIGNS – CARE OF MATERIALS AND FINISHES



BRASS – PLATED FINISHES

Bright Chrome (BC) - INT/EXT / Matt Black Chrome (CB) - INT/EXT / Polished Nickel (PN) - INT / Satin Nickel (SN) - INT

Wipe clean with a soft, damp cloth and dry with a clean, soft cloth.

BRASS – LIVING FINISHES

Burnished Brass (BH) - INT/EXT / Burnished Nickel (NH) - INT / Fine Antique Brass (FA) - INT/EXT / Polished Brass (PU) - INT/EXT / Satin Brass (TW) - INT

Vintage Nickel (VN) - INT / Vintage Patina (VP) - INT/EXT

Living finishes will develop their own individual patina over time as they react with their environment. Once installed a number of factors such as handling, age and environment will lead to gradual wear and oxidation, resulting in each piece developing a unique character and elegance. This is a natural process and is a feature, not a fault, of the base material or finishing technique.

Living finishes are supplied with a protective wax coating to protect the product during transit and installation. These finishes should be cleaned with a soft, lint free cloth, a good quality wax can be reapplied if desired. Polished Brass (PU) can be cleaned with a brass metal polish should you wish to maintain its shiny appearance.

LEATHER

Black (BL) - INT / Bridle White (BW) - INT / Chestnut (CN) - INT / Chocolate (CT) - INT / Slate Grey (GC) - INT / Tan (TA) - INT

Leather is a natural material that will age over time and with use, developing a unique patina; this is part of its character and should be expected. Wipe leather surfaces clean with a soft, damp cloth using heavily diluted soapy water (1 part soap to 12 parts water) then dry with a clean, soft cloth. Once dry, the leather can be fed with a quality beeswax or neutral leather cream.

Marks and dents within the leather can be 'worked out' using a boning tool. Work the marked area in a gentle circular motion to bring the fibres and natural oils back to the surface.

AMALFINE™

Alupewt (AP) - INT / Black Bronze (BB) - INT / Bone (BN) - INT / Cocoa (CO) - INT / Sand (SA) - INT / Silver Bronze (SB) - INT

Wipe clean with a soft, damp cloth or soft brush using heavily diluted warm soapy water then dry with a clean, soft cloth. Once dry the Amalfine™ can be finished with a good quality beeswax.

Do not attempt to clean any finishes with abrasive or solvent based solutions.

INT – Suitable for Interior Applications
EXT - Suitable for Exterior Applications