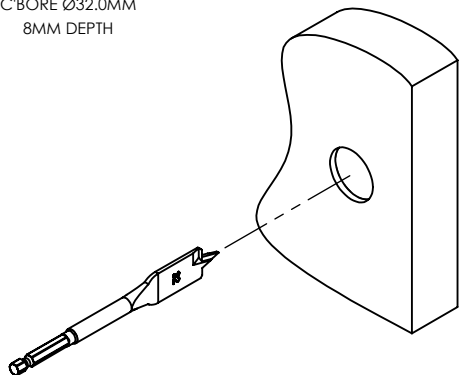


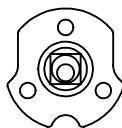
58MM LABYRINTH - FIXED

1. C-BORE Ø32.0MM
8MM DEPTH



(A)

1. INSERT DUMMY SPINDLE
2. USE SQUARE TO ENSURE SPINDLE IS PARRELL WITH
EDGE OF DOOR
3. DRILL 3X Ø2.0MM (5/64") PILOT HOLES

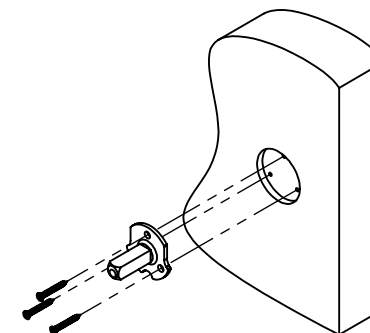


DETAIL A

ORIENTATE SPINDLE PIERCING
HOLE TOWARDS BOTTOM

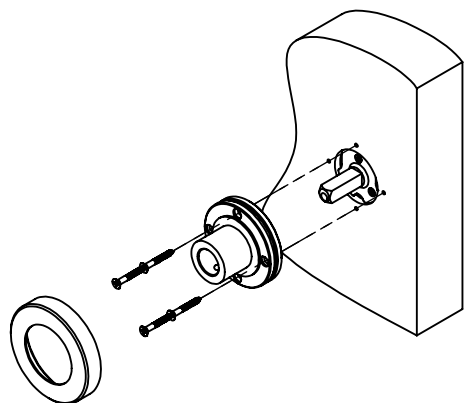
(B)

1. SECURE DUMMY SPINDLE
USING WOOD SCREWS SUPPLIED



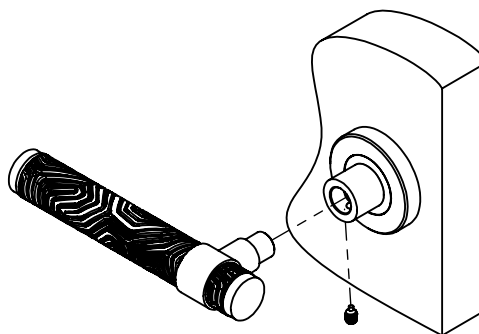
(C)

1. SECURE INNER ROSE USING
N4 WOOD SCREWS SUPPLIED -
ENSURE GRUB SCREW HOLE IS FACING
DOWN
2. PRESS OUTER ROSE ONTO INNER ROSE



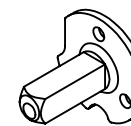
(D)

1. SECURE LEVER TO SPINDLE USING
M6 PIERCING GRUB SCREW



(E)

FIXING KIT



DUMMY SPINDLE
(X1)



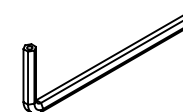
N6 X 1.25" POS C/SK
(X3)



N4 X 0.75" POS C/SK
(X4)



M6 PIERCING GRUB SCREW
(X1)



ALLEN KEY
(X1)

TURNSTYLE DESIGNS – CARE OF MATERIALS AND FINISHES



BRASS – PLATED FINISHES

Bright Chrome (BC) - INT/EXT / Matt Black Chrome (CB) - INT/EXT / Polished Nickel (PN) - INT / Satin Nickel (SN) - INT

Wipe clean with a soft, damp cloth and dry with a clean, soft cloth.

BRASS – LIVING FINISHES

Burnished Brass (BH) - INT/EXT / Burnished Nickel (NH) - INT / Fine Antique Brass (FA) - INT/EXT / Polished Brass (PU) - INT/EXT / Satin Brass (TW) - INT

Vintage Nickel (VN) - INT / Vintage Patina (VP) - INT/EXT

Living finishes will develop their own individual patina over time as they react with their environment. Once installed a number of factors such as handling, age and environment will lead to gradual wear and oxidation, resulting in each piece developing a unique character and elegance. This is a natural process and is a feature, not a fault, of the base material or finishing technique.

Living finishes are supplied with a protective wax coating to protect the product during transit and installation. These finishes should be cleaned with a soft, lint free cloth, a good quality wax can be reapplied if desired. Polished Brass (PU) can be cleaned with a brass metal polish should you wish to maintain its shiny appearance.

LEATHER

Black (BL) - INT / Bridle White (BW) - INT / Chestnut (CN) - INT / Chocolate (CT) - INT / Slate Grey (GC) - INT / Tan (TA) - INT

Leather is a natural material that will age over time and with use, developing a unique patina; this is part of its character and should be expected. Wipe leather surfaces clean with a soft, damp cloth using heavily diluted soapy water (1 part soap to 12 parts water) then dry with a clean, soft cloth. Once dry, the leather can be fed with a quality beeswax or neutral leather cream.

Marks and dents within the leather can be 'worked out' using a boning tool. Work the marked area in a gentle circular motion to bring the fibres and natural oils back to the surface.

AMALFINE™

Alupewt (AP) - INT / Black Bronze (BB) - INT / Bone (BN) - INT / Cocoa (CO) - INT / Sand (SA) - INT / Silver Bronze (SB) - INT

Wipe clean with a soft, damp cloth or soft brush using heavily diluted warm soapy water then dry with a clean, soft cloth. Once dry the Amalfine™ can be finished with a good quality beeswax.

Do not attempt to clean any finishes with abrasive or solvent based solutions.

INT – Suitable for Interior Applications
EXT - Suitable for Exterior Applications