

# PEOPLE & PLACES

Covetable new launches by talented makers and elite brands, creative collaborations, landmark anniversaries and unmissable events

FEATURE SARAH FEELEY



## Bringing Nature Home

*Thyme's Water Meadow collection*

Evocative watercolour paintings by Caryn Hibbert of the water meadows surrounding her Cotswolds retreat Thyme inspired a new Bertoli fabrics and wallpaper collection.

The Water Meadow collection includes River Mint, Willow (pictured above) and Yellow Iris designs, scented diffusers and candles.

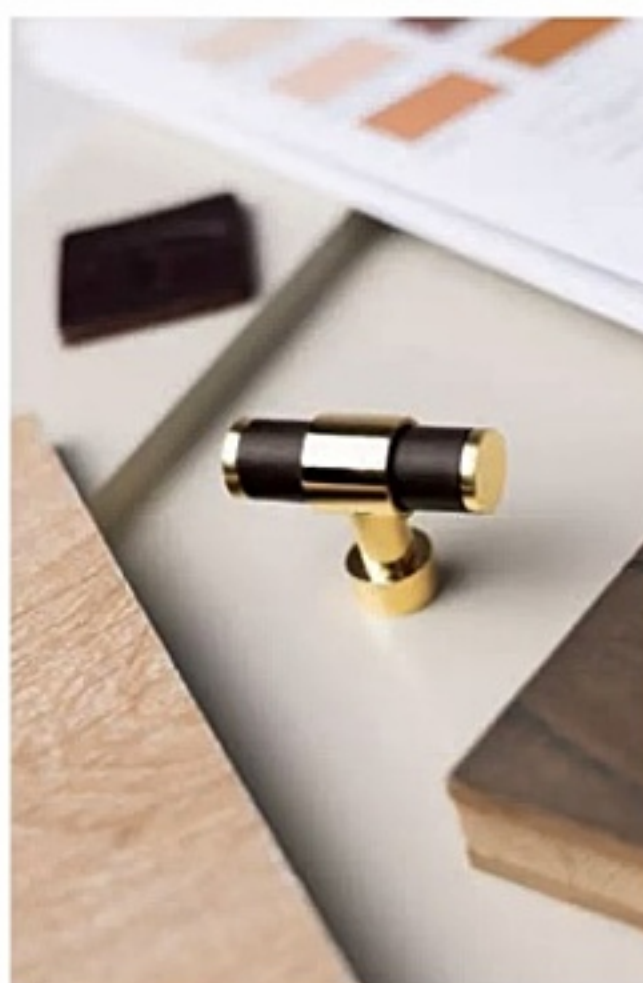
Milly Hibbert of Thyme says: 'Research shows that visual and scent connections with nature can reduce stress, improve mood and elevate creativity. This has become a source of inspiration, creating spaces designed to instill calm and happiness.' [thyme.co.uk](http://thyme.co.uk); [bertioli.co.uk](http://bertioli.co.uk)

## Crafted in the Cotswolds

*Elegant and sustainable table linens*

When Verity de Yong began experimenting with using food scraps and peelings to create natural dyes for fabric after noticing how much waste she was creating, it sparked an idea for a new business. VED Cooks boasts an elegant range of Irish linen napkins, tablecloths and placemats dyed in the Cotswolds using plant, fruit and vegetable-based dyes with zero chemicals.

'Craftsmanship and quality are at the heart of everything we create,' says Verity, 'inspired by the changing seasons and the outdoors of the Cotswolds.' [vedcooks.com](http://vedcooks.com)



## A Worldwide First

*Elite hardware by Turnstyle Designs*

Like a button on a coat, a handle can make or break a great room or piece of furniture and must function as well as it looks. This is a core belief of Devon-based Turnstyle Designs – the first hardware manufacturer in the world to become a certified B Corporation, achieving high standards of performance, sustainability, transparency and more. [turnstyledesigns.com](http://turnstyledesigns.com) ►