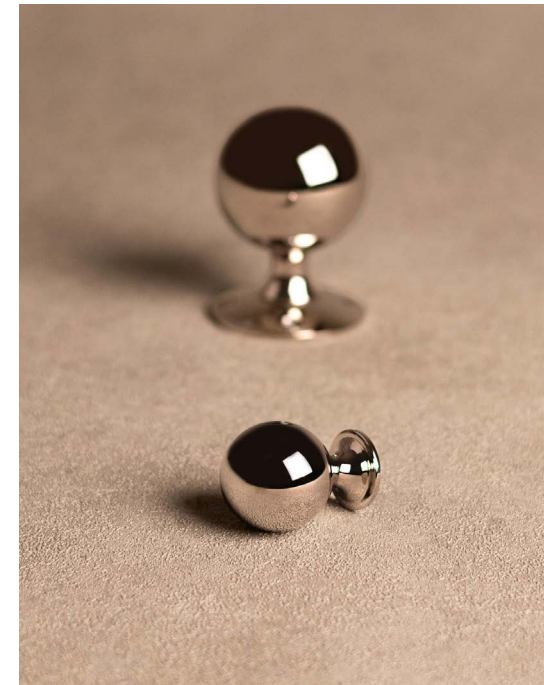


## SPHERE

Whether you prefer the sleek refinement of solid brass or the hand-crafted texture of our hammered finishes, our Sphere collection promises to add a touch of elegance to any interior space.

The Sphere design is the result of combining modern engineering with traditional brassworking techniques. The hammered sphere was developed through an engineering innovation that allows us to apply our signature hand hammered finish to a solid ball of brass. Precisely machined raw brass is turned to form a perfect sphere shape. Then, using specialist tools, our skilled team of artisans are able to apply Turnstyle's unique hammering pattern. The result is a completely new silhouette for the Turnstyle solid brass range.

Available as a door and cabinet knob, in our hand patinated living finishes as well as all our plated and polished options.



# SOLID AND HAMMERED

Solid Door Knob - S6359



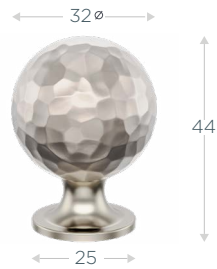
Solid Cabinet Knob - S6524



Hammered Door Knob - HS6359

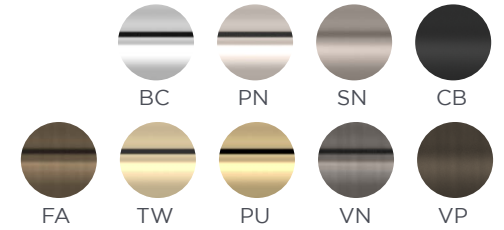


Hammered Cabinet Knob - HS6524



NAME	CODE	ROSE (mm)	DIA (mm)	PROJECTION (mm)
SPHERE SOLID DOOR KNOB	S6359	52	52	76
SPHERE SOLID CABINET KNOB	S6524	-	32	44
SPHERE HAMMERED DOOR KNOB	HS6359	52	52	76
SPHERE HAMMERED CABINET KNOB	HS6524	-	32	44

## SOLID FINISHES



## SOLID HAMMERED FINISHES

