



## TURNSTYLE SUPPORTS

As proud members of **'1% For the Planet'**, we donate **1.5%** our annual turnover to environmental causes and organisations and a further **0.5%** to mental health charities.

We strive wherever possible to support local and give back to the community, whether that be through locally sourced food, gifts, charities or even company events.

Learn more about what we are doing at Turnstyle Designs to help do our bit as responsible manufacturers and support important organisations.





## COMPANY INCENTIVES

As a company, we are passionate about giving back and supporting many organisations. We also offer this opportunity to our employees.

Members of staff that have been with the Turnstyle family for certain amount of time can select a charity, or charities, of their choosing and money is donated for them on behalf of the company. They also have the chance to donate as part of a choice of gifts offered to them each year on their birthday.

### Staff supported charities:

- Macmillan Cancer Support
- Many Tears Animal Rescue
- Care For Kids North Devon
- Chemo Hero
- North Devon Hospice
- UK Health Care Work For Ukraine
- Surfers Against Sewage
- Prickles and Paws Hedgehog Rescue
- RNLI
- British Heart Foundation
- Cancer Research
- MS Society
- Action for Children
- Alzheimer's Society
- St Johns Ambulance
- Bliss
- Maine Island
- Clean Ocean
- Make-A-Wish
- Over and Above
- Cinnamon Trust
- Prostate Cancer UK
- Feeding Britain
- Scottish Seabird
- The Passage
- Friends of the Earth
- CLAPA
- Friends of liver lifelines
- Hearts Together
- Participate for Good



### PRESS CONTACT

+44 (0) 1271 411 202 | [pr@turnstyledesigns.com](mailto:pr@turnstyledesigns.com)

[www.turnstyledesigns.com](http://www.turnstyledesigns.com)

### VISIT OUR LONDON SHOWROOM

Unit 115, Design Centre East, Chelsea Harbour, SW10 0XF



Delivering luxury door hardware for high-end residential, commercial and yacht projects for 30 years, Turnstyle Designs was founded by Steve Roberts in 1992. Steve and his wife Christina work collaboratively to design some of the world's most innovative decorative hardware, using a broad palette of materials and finishes including, brass, leather and Amalfine™.

From hand stitched leather to individually hammered door hardware, attention to detail is found in every product made. Turnstyle is proudly British made and manufactured in the beautiful Devon countryside. With multiple product combinations and flexibility to allow customisation, there is something for everyone.





# ENVIRONMENTAL CHARITIES



## UNESCO NORTH DEVON BIOSPHERE

North Devon is the location of our head office and purpose-built factory and where our luxury hardware is made. A place that we are proud to call home.



UNESCO Biospheres are where people and nature come together in a world-class environment. North Devon has been recognised as a UNESCO biosphere area. To protect this area of outstanding beauty North Devon Biosphere is an accreditation scheme that aims to develop partnerships and manage projects to protect the ecosystems for a more sustainable future.

Turnstyle Designs is a proud member of the North Devon UNESCO Biosphere. The scheme allows businesses to show commitment toward conservation, local development, and awareness-raising for North Devon through donations. As a company, we pledge to be part of a community helping nature to thrive.

Our biosphere is here to inspire a positive future by connecting people and nature today. It sounds very dramatic but it is true! The North Devon UNESCO Biosphere is a very special region. You only have to cross the watershed into the river catchment to see it and feel it. It's not just the wildlife but the landscape, the culture and the people that live there that make the area worthy of the UNESCO designation.

[Learn more about North Devon Biosphere via our blog](#)



### PRESS CONTACT

+44 (0) 1271 411 202 | [pr@turnstyledesigns.com](mailto:pr@turnstyledesigns.com)

[www.turnstyledesigns.com](http://www.turnstyledesigns.com)

### VISIT OUR LONDON SHOWROOM

Unit 115, Design Centre East, Chelsea Harbour, SW10 0XF



Delivering luxury door hardware for high-end residential, commercial and yacht projects for 30 years, Turnstyle Designs was founded by Steve Roberts in 1992. Steve and his wife Christina work collaboratively to design some of the world's most innovative decorative hardware, using a broad palette of materials and finishes including, brass, leather and Amalfine™.

From hand stitched leather to individually hammered door hardware, attention to detail is found in every product made. Turnstyle is proudly British made and manufactured in the beautiful Devon countryside. With multiple product combinations and flexibility to allow customisation, there is something for everyone.



## CARBON NEUTRAL BRITAIN

Carbon Neutral Britain™ - the UK's Carbon Offsetting Initiative – helping British Individuals and Businesses make an impact on Climate Change.

Whilst measuring and reducing emissions are vital - Carbon Offsetting is a proactive approach to environmental action, reversing the impact of emissions created now.

UN IPCC studies have highlighted the importance of businesses making a difference in the next 5 years before changes to the climate are irreversible, and so by Carbon Offsetting & becoming Carbon Neutral, businesses are doing their part for the planet now - when it is the most important.

In order to become certified as a Carbon Neutral Business, Carbon Neutral Britain™ are required to calculate your organisations emissions, following the ISO 14064 and GHG Emissions Protocol Accounting Standard - the largest and most widely used corporate standards - used by businesses globally.

*“Certified to the highest standards, all the carbon offsetting projects that we support are regulated through the Verra - Verified Carbon Standard (VCS), the Gold Standard - Voluntary Emission Reductions (VER) and the United Nations - Certified Emission Reductions (CER) programmes. As the three largest, and most regulated carbon offsetting standards used globally by businesses - this ensures the measurements, and tonnes of CO<sub>2</sub>e offset are accurate and verified.”*



Learn more about Carbon Neutral Britain

Make a Difference to Climate Change

WE ARE A CARBON  
NEUTRAL BUSINESS

We have calculated  
and offset our total emissions



#carbonneutralbritain  
@carbonneutralbritain



### PRESS CONTACT

+44 (0) 1271 411 202 | [pr@turnstyledesigns.com](mailto:pr@turnstyledesigns.com)

[www.turnstyledesigns.com](http://www.turnstyledesigns.com)

### VISIT OUR LONDON SHOWROOM

Unit 115, Design Centre East, Chelsea Harbour, SW10 0XF



Delivering luxury door hardware for high-end residential, commercial and yacht projects for 30 years, Turnstyle Designs was founded by Steve Roberts in 1992. Steve and his wife Christina work collaboratively to design some of the world's most innovative decorative hardware, using a broad palette of materials and finishes including, brass, leather and Amalfine™.

From hand stitched leather to individually hammered door hardware, attention to detail is found in every product made. Turnstyle is proudly British made and manufactured in the beautiful Devon countryside. With multiple product combinations and flexibility to allow customisation, there is something for everyone.



## DEVON WILDLIFE TRUST

Nature is in trouble and Devon Wildlife Trust's mission stems from the need for urgent change and our belief that, if enough people care and act, we can bring nature back and do it on a grand scale.

For 60 years, they have been at the forefront of protecting wildlife and the wild places that make Devon so special and believe, passionately, that a better world is one where nature and people thrive together. They are the only Devon focused charity that exists to protect all wildlife in Devon, on land and at sea.

Over the next ten years, Devon Wildlife Trust wants to double the area of land and sea that is rich in nature. They want all Devon's soils, rivers, farmland and urban areas to be managed sustainably, so the air we breathe, the water we drink and the fields and streets we walk through make us healthier and happier. DWT want to bring back wildlife that has been lost and that can help us create a rich natural environment that is helping our fight against climate change. They want at least a quarter of the population to be making nature, and action for nature, part of their daily lives.

By joining the DWT as a member you help them to protect, restore and create wildlife-rich landscapes and bring more wildflowers, butterflies, birds and mammals back to Devon.



Learn more about Devon Wildlife Trust

### PRESS CONTACT

+44 (0) 1271 411 202 | [pr@turnstyledesigns.com](mailto:pr@turnstyledesigns.com)

[www.turnstyledesigns.com](http://www.turnstyledesigns.com)

### VISIT OUR LONDON SHOWROOM

Unit 115, Design Centre East, Chelsea Harbour, SW10 0XF



Delivering luxury door hardware for high-end residential, commercial and yacht projects for 30 years, Turnstyle Designs was founded by Steve Roberts in 1992. Steve and his wife Christina work collaboratively to design some of the world's most innovative decorative hardware, using a broad palette of materials and finishes including, brass, leather and Amalfine™.

From hand stitched leather to individually hammered door hardware, attention to detail is found in every product made. Turnstyle is proudly British made and manufactured in the beautiful Devon countryside. With multiple product combinations and flexibility to allow customisation, there is something for everyone.



## PLASTIC FREE NORTH DEVON

Plastic Free North Devon (PFND), is a grassroots community organisation that aims to inspire North Devon residents, tourists and businesses to drastically reduce their consumption of single-use plastic, remove it from the environment and dispose of it properly.

Over the past five years the business has had a real shift in taking action across the organisation to improve environmental sustainability.

A key point in this process occurred in 2019 when we joined the 1% for the planet initiative and subsequently chose among others to support Plastic Free North Devon as one of our non-profit partners. Our involvement with them aligned well to a review we were already undertaking with some of the materials we were using within the business and in particular gave more emphasis and justification to our plans to remove as much plastic from our operations as possible.

We have worked hard to eliminate plastics from our packaging process and other areas of our business where we can with the supplier and customers.

Read more about the efforts we have made, and continue to make, with the removal of all single use plastics from all our packaging in the blog below:

[Read our blog 'Sustainable packaging'](#)

[Learn more about Plastic Free North Devon](#)



### PRESS CONTACT

+44 (0) 1271 411 202 | [pr@turnstyledesigns.com](mailto:pr@turnstyledesigns.com)

[www.turnstyledesigns.com](http://www.turnstyledesigns.com)

### VISIT OUR LONDON SHOWROOM

Unit 115, Design Centre East, Chelsea Harbour, SW10 0XF



Delivering luxury door hardware for high-end residential, commercial and yacht projects for 30 years, Turnstyle Designs was founded by Steve Roberts in 1992. Steve and his wife Christina work collaboratively to design some of the world's most innovative decorative hardware, using a broad palette of materials and finishes including, brass, leather and Amalfine™.

From hand stitched leather to individually hammered door hardware, attention to detail is found in every product made. Turnstyle is proudly British made and manufactured in the beautiful Devon countryside. With multiple product combinations and flexibility to allow customisation, there is something for everyone.



## REWILDING BRITAIN



Rewilding Britain is the first and only country-wide organisation in Britain focusing on rewilding and the amazing benefits it can bring for people, nature and climate.

Their four core values are guided by a vision of the world we want to see. Where rewilding is flourishing across Britain, reconnecting us with the natural world, sustaining communities and tackling the species extinction crisis and climate emergency. Rewilding Britain are individually and collectively committed to putting these values into practice.

*"We want to see rewilding flourishing across Britain – reconnecting us with the natural world, sustaining communities and tackling the climate emergency and the extinction crisis.*

*We encourage a wide diversity of views and new, creative thinking because we can all play a role in building a better world."*

Guided by the best scientific evidence and technical expertise, Rewilding Britain use real life experiences and stories to support and inform their approach.

*"Our vision is at least 5% of Britain rewilding, with 25% returned to broader mosaics of nature-friendly land and marine uses—including farming, forestry and fishing. We see this expansion reversing biodiversity loss and enabling nature to bounce back, helping us adapt to climate change as our complex ecosystems find their own answers.*

*The goal is to help nature, for us to live better with nature and take our place as part of nature."*

[Learn more about Rewilding Britain](#)



### PRESS CONTACT

+44 (0) 1271 411 202 | [pr@turnstyledesigns.com](mailto:pr@turnstyledesigns.com)

[www.turnstyledesigns.com](http://www.turnstyledesigns.com)

### VISIT OUR LONDON SHOWROOM

Unit 115, Design Centre East, Chelsea Harbour, SW10 0XF



Delivering luxury door hardware for high-end residential, commercial and yacht projects for 30 years, Turnstyle Designs was founded by Steve Roberts in 1992. Steve and his wife Christina work collaboratively to design some of the world's most innovative decorative hardware, using a broad palette of materials and finishes including, brass, leather and Amalfine™.

From hand stitched leather to individually hammered door hardware, attention to detail is found in every product made. Turnstyle is proudly British made and manufactured in the beautiful Devon countryside. With multiple product combinations and flexibility to allow customisation, there is something for everyone.



## RIVERS TRUST



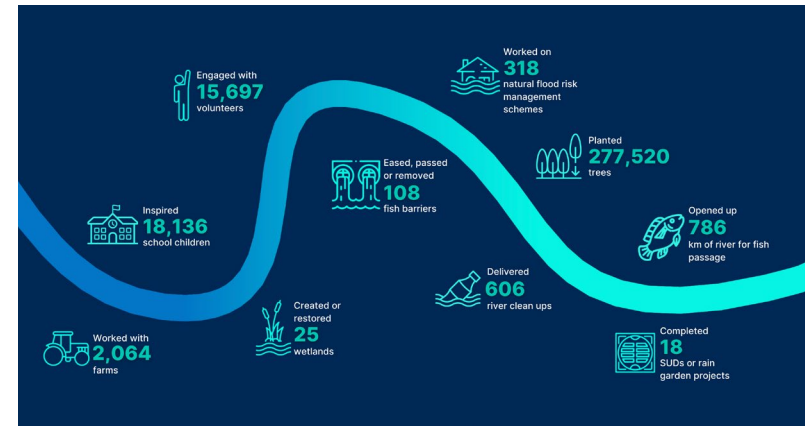
The Rivers Trust is an umbrella organisation for 65 Rivers Trust members in the UK and Ireland. They are river and catchment conservation experts with a wealth of data and expertise at their fingertips.

Rivers shape our landscapes and provide the foundations for our cities, towns and countryside. When they thrive, so do we. The Rivers Trust work with members trusts to make their shared vision a reality: wild, healthy, natural rivers, valued by all.

*"We want all life to thrive in and around our rivers. Whether you enjoy fishing, swimming or a riverside stroll, our rivers need us more than ever to recover and revive."*

With a team of expertise, reach and their local knowledge, they work with farmers, residents and organisations to provide advice and resources for their communities. The Rivers Trust brings together the people, knowledge, data and intelligence to help rivers thrive again; for us and future generations. Our rivers are an integral part of our communities and the Rivers Trust are leading the movement to protect them.

[Learn more about Rivers Trust](#)



### PRESS CONTACT

+44 (0) 1271 411 202 | [pr@turnstyledesigns.com](mailto:pr@turnstyledesigns.com)

[www.turnstyledesigns.com](http://www.turnstyledesigns.com)

### VISIT OUR LONDON SHOWROOM

Unit 115, Design Centre East, Chelsea Harbour, SW10 0XF



Delivering luxury door hardware for high-end residential, commercial and yacht projects for 30 years, Turnstyle Designs was founded by Steve Roberts in 1992. Steve and his wife Christina work collaboratively to design some of the world's most innovative decorative hardware, using a broad palette of materials and finishes including, brass, leather and Amalfine™.

From hand stitched leather to individually hammered door hardware, attention to detail is found in every product made. Turnstyle is proudly British made and manufactured in the beautiful Devon countryside. With multiple product combinations and flexibility to allow customisation, there is something for everyone.



## SURFERS AGAINST SEWAGE

From a handful of activists to a nationwide movement, over the last 30 years Surfers Against Sewage has grown into one of the UK's most successful marine conservation and campaigning charities. And they are still growing.

For people to thrive and live life to the fullest, the ocean must thrive too. And so we need to confront all that threatens it. S.A.S are a campaigning charity made up of water lovers who protect the ocean and all it makes possible. They take action on the ground that triggers change at the top. Action from the beachfront, to the front-bench.

Through their innovative and ambitious campaigning and education programmes, they're building a community that cares deeply about the planet we live on. That cares passionately about the ocean and that knows the difference people power can really make.

The heritage of their organisation is anchored in the ocean. Yet their reach and influence now permeates communities and institutions nationwide.



Learn more about Surfers Against Sewage

### PRESS CONTACT

+44 (0) 1271 411 202 | [pr@turnstyledesigns.com](mailto:pr@turnstyledesigns.com)

[www.turnstyledesigns.com](http://www.turnstyledesigns.com)

### VISIT OUR LONDON SHOWROOM

Unit 115, Design Centre East, Chelsea Harbour, SW10 0XF



Delivering luxury door hardware for high-end residential, commercial and yacht projects for 30 years, Turnstyle Designs was founded by Steve Roberts in 1992. Steve and his wife Christina work collaboratively to design some of the world's most innovative decorative hardware, using a broad palette of materials and finishes including, brass, leather and Amalfine™.

From hand stitched leather to individually hammered door hardware, attention to detail is found in every product made. Turnstyle is proudly British made and manufactured in the beautiful Devon countryside. With multiple product combinations and flexibility to allow customisation, there is something for everyone.



T U S K



Tusk is a dynamic and adaptable organisation with over 30 years' experience initiating and funding wildlife conservation programmes across Africa.

Tusk was established in 1990 in response to the poaching crisis of the 1980's, which pushed black rhino to the brink of extinction and saw 100,000 elephants slaughtered each year. Since then they have become a highly effective and efficient force in African wildlife conservation.

Whether tackling the rampant illegal wildlife trade, habitat loss or human-wildlife conflict, their success is rooted in the understanding that the interests of both people and wildlife are inextricably inter-twined, and that both must be served if the achievements are to last.

Tusk has achieved a great deal and has developed a strong reputation, buoyed by the high level of support and involvement of HRH The Prince of Wales, who became our Royal Patron in 2005. The charity is known for delivering well-targeted intervention, and has maintained a low cost/income that is one of the most competitive among their peers.

Learn more about Tusk



#### PRESS CONTACT

+44 (0) 1271 411 202 | [pr@turnstyledesigns.com](mailto:pr@turnstyledesigns.com)

[www.turnstyledesigns.com](http://www.turnstyledesigns.com)

#### VISIT OUR LONDON SHOWROOM

Unit 115, Design Centre East, Chelsea Harbour, SW10 0XF



Delivering luxury door hardware for high-end residential, commercial and yacht projects for 30 years, Turnstyle Designs was founded by Steve Roberts in 1992. Steve and his wife Christina work collaboratively to design some of the world's most innovative decorative hardware, using a broad palette of materials and finishes including, brass, leather and Amalfine™.

From hand stitched leather to individually hammered door hardware, attention to detail is found in every product made. Turnstyle is proudly British made and manufactured in the beautiful Devon countryside. With multiple product combinations and flexibility to allow customisation, there is something for everyone.



## SOUTH WEST COAST PATH



## South West Coast Path ASSOCIATION

For almost half a century SWCP have been championing the South West Coast Path to make it one of the world's greatest trails. Since its designation as a National Trail in 1973, they have been working to establish, improve and protect the 630 mile route to make your experience on the Path the best it can be.

Today, the South West Coast Path Association (SWCPA) is a registered charity, providing information for the National Trail and raising funds to improve access for all. They coordinate hundreds of projects with the help of the Trails Partnership.

*"We would like to thank Turnstyle Designs for joining us in our 50th year as a charity by becoming Business Mile Makers of the South West Coast Path Association. Business Mile Makers support the protection, enhancement and celebration of Britain's best loved National Trail by contributing the amount that it takes to look after a mile of the South West Coast Path for one whole year. "*

You can find out more about the Association and its work connecting people to nature through inspiring coast path journeys here:

[Inspiring Coast Path Stories - Read Now](#)

[Learn more about SWCP](#)



### PRESS CONTACT

+44 (0) 1271 411 202 | [pr@turnstyledesigns.com](mailto:pr@turnstyledesigns.com)

[www.turnstyledesigns.com](http://www.turnstyledesigns.com)

### VISIT OUR LONDON SHOWROOM

Unit 115, Design Centre East, Chelsea Harbour, SW10 0XF



Delivering luxury door hardware for high-end residential, commercial and yacht projects for 30 years, Turnstyle Designs was founded by Steve Roberts in 1992. Steve and his wife Christina work collaboratively to design some of the world's most innovative decorative hardware, using a broad palette of materials and finishes including, brass, leather and Amalfine™.

From hand stitched leather to individually hammered door hardware, attention to detail is found in every product made. Turnstyle is proudly British made and manufactured in the beautiful Devon countryside. With multiple product combinations and flexibility to allow customisation, there is something for everyone.



The image features a large, dark silhouette of a person's head in profile, facing left. The interior of the silhouette is filled with a vibrant sunset scene over a body of water. The sun is a bright, glowing orb positioned in the upper-middle part of the head, with its light reflecting on the water's surface. The sky is a mix of soft orange, yellow, and blue hues, with some wispy clouds visible. The water in the background of the silhouette shows gentle ripples. A semi-transparent dark grey horizontal band runs across the middle of the image, passing through the silhouette's face.

MENTAL HEALTH CHARITIES



## CLARITY NORTH DEVON



Clarity is a registered charity which offers therapeutic counselling, group support and group therapy to anyone experiencing mental health or emotional issues. Their counselling services are delivered by qualified counsellors or final year counselling students led by the Head of Therapy who has over 20 years' experience in mental health services.

All their counsellors and administration staff are volunteers and receive no payment other than travelling expenses. Clarity relies on grants and donations to be able to carry out its work.

Counsellors support:

- Having difficulties functioning in your life due to unresolved issues
- Experiencing emotional issues that affect your life
- Finding it difficult to cope due to feeling depressed, anxious and sad.

Clarity's services comprise of:

- Therapeutic and support groups for a range of mental health and emotional issues
- 1-to-1 counselling

Learn more about Clarity North Devon



### PRESS CONTACT

+44 (0) 1271 411 202 | [pr@turnstyledesigns.com](mailto:pr@turnstyledesigns.com)

[www.turnstyledesigns.com](http://www.turnstyledesigns.com)

### VISIT OUR LONDON SHOWROOM

Unit 115, Design Centre East, Chelsea Harbour, SW10 0XF



Delivering luxury door hardware for high-end residential, commercial and yacht projects for 30 years, Turnstyle Designs was founded by Steve Roberts in 1992. Steve and his wife Christina work collaboratively to design some of the world's most innovative decorative hardware, using a broad palette of materials and finishes including, brass, leather and Amalfine™.

From hand stitched leather to individually hammered door hardware, attention to detail is found in every product made. Turnstyle is proudly British made and manufactured in the beautiful Devon countryside. With multiple product combinations and flexibility to allow customisation, there is something for everyone.



## THE WAVE PROJECT

The Wave Project work with young people who are referred from across the all of Devon by running sessions on both the North and South coast. Current beach locations for Surf Therapy are Bigbury, Croyde, Goodrington, Sidmouth and Westward Ho!



Impact and evaluation has been embedded in The Wave Project since day one. All their programmes evaluate wellbeing change from a participant and whole-group perspective. Every young person who has ever taken part in one of their programmes has completed a questionnaire before and after their course to say how it affected them. These client questionnaires use validated items to ensure they are accurate and robust. The Wave Project also work with parents and referral partners to get their perspectives on change.

Over the past 10 years, surf therapy has become an established form of therapeutic support for both mental and physical health. It is recognised by the NHS in the UK as an effective form of therapy for children and young people at risk of mental ill-health and is also used by the Police and Blue Light services as therapy for serving officers and professionals.

Surf therapy has been the core project for over a decade and lies at the heart of what they do.

[Learn more about The Wave Project](#)



### PRESS CONTACT

+44 (0) 1271 411 202 | [pr@turnstyledesigns.com](mailto:pr@turnstyledesigns.com)

[www.turnstyledesigns.com](http://www.turnstyledesigns.com)

### VISIT OUR LONDON SHOWROOM

Unit 115, Design Centre East, Chelsea Harbour, SW10 0XF



Delivering luxury door hardware for high-end residential, commercial and yacht projects for 30 years, Turnstyle Designs was founded by Steve Roberts in 1992. Steve and his wife Christina work collaboratively to design some of the world's most innovative decorative hardware, using a broad palette of materials and finishes including, brass, leather and Amalfine™.

From hand stitched leather to individually hammered door hardware, attention to detail is found in every product made. Turnstyle is proudly British made and manufactured in the beautiful Devon countryside. With multiple product combinations and flexibility to allow customisation, there is something for everyone.



## YOUNG DEVON

Young Devon is a young people's charity in the South West of England. Their mission is to make Devon a better place for all young people. Each year they work with over 2,000 young people, building quality relationships to help them thrive.

*"Building quality relationships to help young people thrive is our guiding principle; the principle at the centre of every service we offer, that sits behind everything that we do. It is why our Skills, Accommodation, Wellbeing and Voice teams can help over 2000 young people every year."*

Their Accommodation team have provided over 60,000 bed nights and the Homelessness Prevention Teams worked with 208 young people to ensure no one went without a roof over their head. The Wellbeing team deliver 1000 hours of counselling, developed mental health training in schools and were there for 100 young people who had suffered because of a crime. The Change Academy supported over 350 young people skills, training and apprenticeship programs, helping to empower young people to become active members of their community.

Turnstyle Designs recently donated to the local charity Young Devon to help aid a renovation project. This project is to help house young, vulnerable people in North Devon and avoid them being out in the cold this Christmas. Find out more via the blog below:

[Bringing young people out of the cold this winter - Read Now](#)

[Learn more about Young Devon](#)



### PRESS CONTACT

+44 (0) 1271 411 202 | [pr@turnstyledesigns.com](mailto:pr@turnstyledesigns.com)

[www.turnstyledesigns.com](http://www.turnstyledesigns.com)

### VISIT OUR LONDON SHOWROOM

Unit 115, Design Centre East, Chelsea Harbour, SW10 0XF



Delivering luxury door hardware for high-end residential, commercial and yacht projects for 30 years, Turnstyle Designs was founded by Steve Roberts in 1992. Steve and his wife Christina work collaboratively to design some of the world's most innovative decorative hardware, using a broad palette of materials and finishes including, brass, leather and Amalfine™.

From hand stitched leather to individually hammered door hardware, attention to detail is found in every product made. Turnstyle is proudly British made and manufactured in the beautiful Devon countryside. With multiple product combinations and flexibility to allow customisation, there is something for everyone.