

RECESS AMALFINE RANGE PULL HANDLES



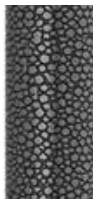
BARREL



ROUGH CUT



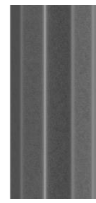
WIRE



SHAGREEN



BAMBOO
BARREL



FACETED
BARREL

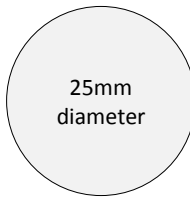
Fixing Configurations

Timber Door

- Bolt fix - single
- Face fix - single
- Back to back - pair

Glass Door

- Bolt fix - single
- Back to back - pair



Bolt fixing and Back to back fixing – timber door

Drill 10mm diameter holes at positions as indicated

Face fixing - timber door only

Drill 13mm diameter holes at positions as indicated

Bolt fixing and Back to back fixing – glass door

Drill 12mm diameter holes at positions as indicated

Please contact sales for detailed fitting instructions

