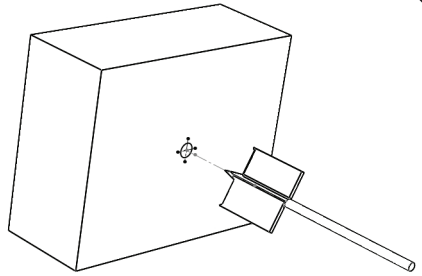


Push Button Assembly

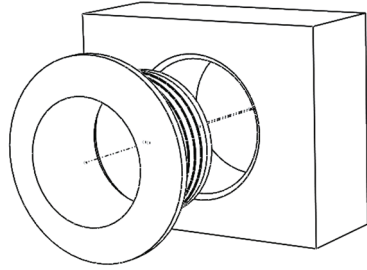
Fitting Instructions

①



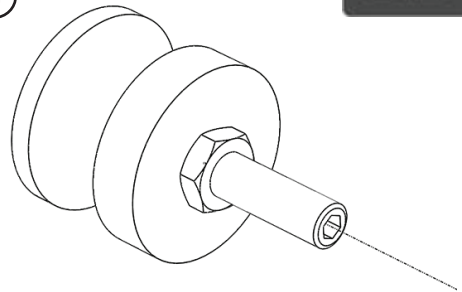
Drill Ø 25.4mm (1")

②



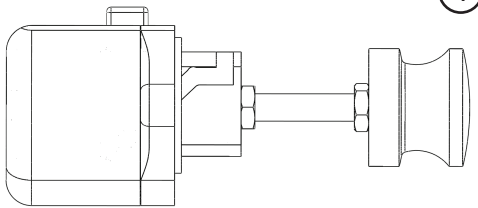
Insert Rose

③



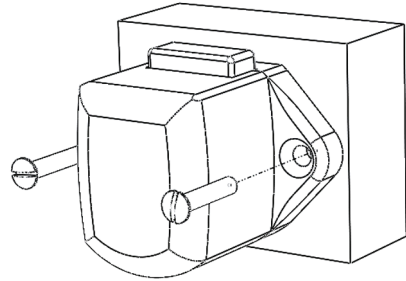
Lock Push Button And Set Screw Together With First Nut

④

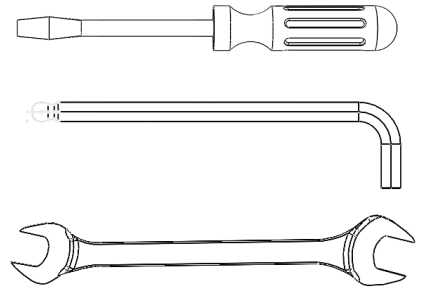


Assemble Push Button And Lock Assembly With Second Nut So That When Assembly Is Locked The Push Button Is Flush With Rose

⑤



Screw Complete Lock Assembly To Wood With Push Button Looking Out



Tools Needed:  
2.5mm Allen Key - 10mm Spanner  
- Flat Head Screwdriver