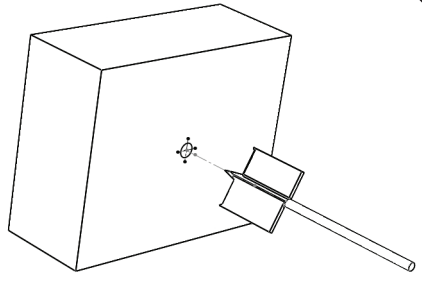


# Push Button Assembly

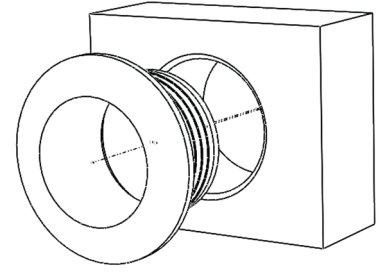
## Fitting Instructions

①



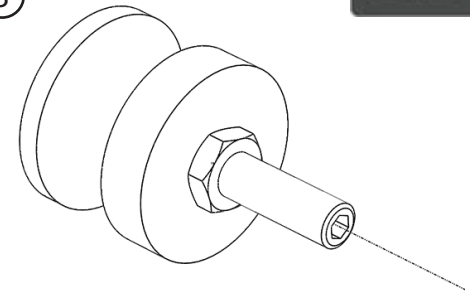
Drill Ø 25.4mm (1")

②



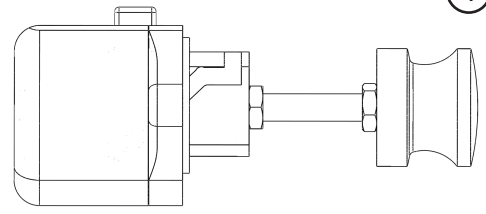
Insert Rose

③



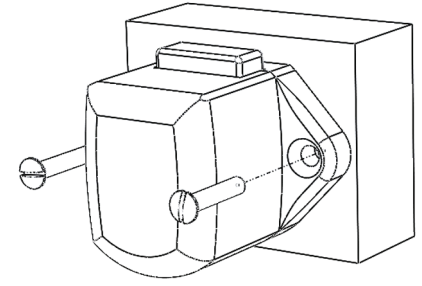
Lock Push Button And Set Screw  
Together With First Nut

④

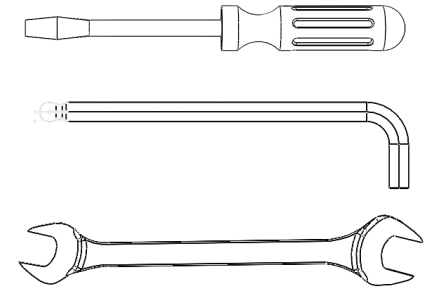


Assemble Push Button And Lock  
Assembly With Second Nut So That  
When Assembly Is Locked The  
Push Button Is Flush With Rose

⑤



Mount Complete Lock Assembly  
To Rear Face Of Drawer



Tools Needed:  
2.5mm Allen Key - 10mm Spanner  
- Flat Head Screwdriver