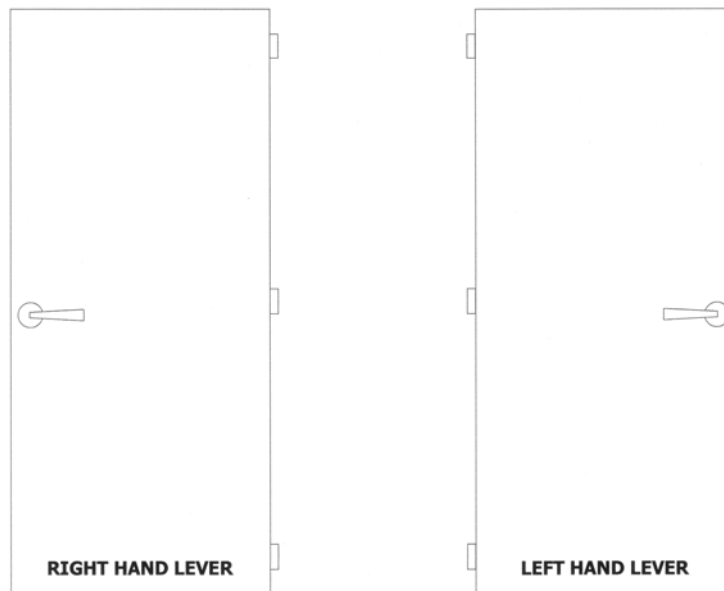


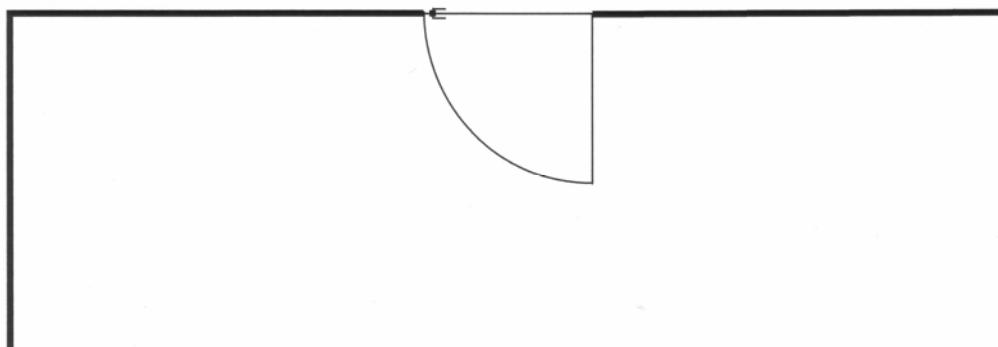
HANDING – DOOR LEVERS

If ordering handed sets of door levers (i.e. split finishes), or half pairs of door levers please use the following method to determine the correct handing.

The direction the lever points towards the hinge is the hand of the door lever. For example when facing the door if the hinges are on your right the door lever needs to be a right handed lever (see diagrams below).



Using this method it is possible to order a pair of door levers in split finishes, for example a plain design leather lever on the inside and a plain design composite lever externally. The illustration below would be coded as follows.



Internal door lever – Plain design in black leather with satin nickel rose – right handed (RT)

External door lever – Plain design in ebony with satin nickel rose – left handed (LT)

Ordering code:

Pair, LH1530 BL SN RT / 1530 EB SN LT