

## NORTON

**Designed by Christina Roberts, these oversized, bold door levers were inspired by the classic Great British Motorbikes of the 1950s.**

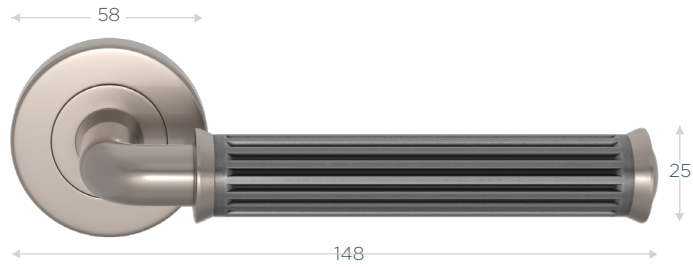
The Norton design has a heavily grooved grip, creating a tactile feel, much like grabbing the handle of a motorbike. The design is set on our Pipe door lever shaft and comes in four different Amalfine™ finishes, as well as Solid Brass. There is also a door pull, knob and cabinet knob available to fully complete the look.

Detailed with complimentary classically lined caps and collars, this design is both bold and robust, making the perfect statement piece, available in 45 different finish and material combinations.



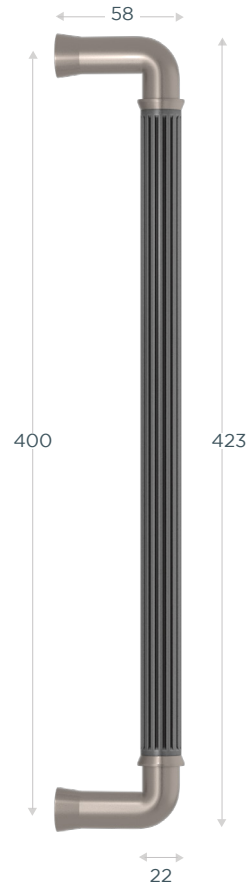
# AMALFINE

Lever Handle - QA2020

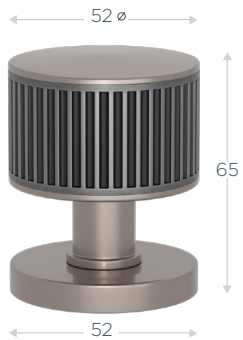


Projection: 65mm | 58mm Round Rose

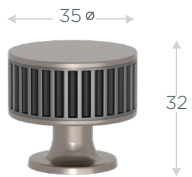
Norton Pull Handle - QA4802



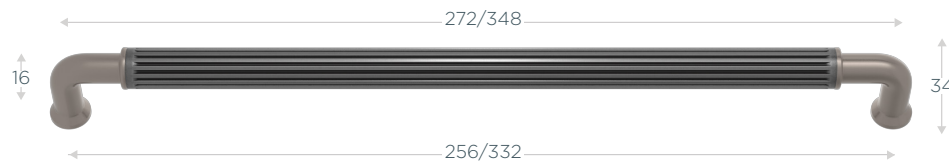
Door Knob - P1700



Cabinet Knob - P1189



16mm Cab D Handle - QA3909



| NAME                            | CODE   |
|---------------------------------|--------|
| LEVER HANDLE ON 58mm ROUND ROSE | QA2020 |
| STACKED DOOR KNOB               | P1700  |
| STACKED CABINET KNOB            | P1189  |
| 16MM CABINET PULL               | QA3909 |
| 16MM CABINET PULL               | QA3909 |

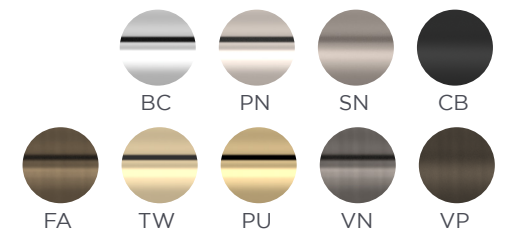
See website for full dimensions and specification details

Contact Turnstyle Sales Department for Latch and Mortise Lock Options

## GRIP FINISHES

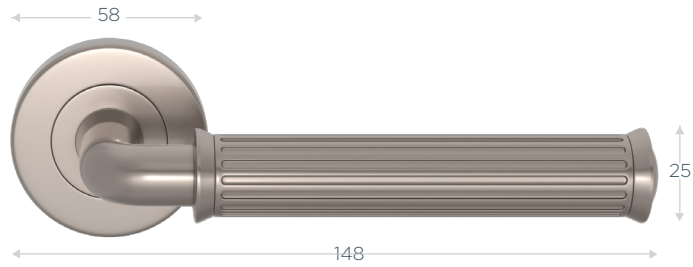


## METAL FINISHES



# SOLID

## Solid Lever Handle - QS2020



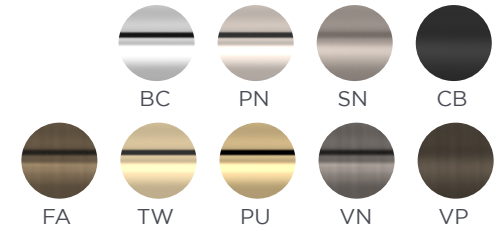
Projection: 65mm | 58mm Round Rose

| NAME                            | CODE   | QTY   |
|---------------------------------|--------|-------|
| LEVER HANDLE ON 58mm ROUND ROSE | QS2020 | PAIR  |
| BITE ON 58MM ROUND ROSE         | S8400  | P/SET |

See website for full dimensions and specification details

Contact Turnstyle Sales Department for Latch and Mortise Lock Options

### METAL FINISHES



### ACCESSORIES

#### BITE ON 58MM FLAT ROSE - S8400

